



# Illuminations

mattawan public education foundation

September 2016

## Cheers to Education October 25th!

Join the Mattawan Public Education Foundation at Barn Brewers Brewery in Lawton on Tuesday, October 25 to say **CHEERS to Education!** We'll have fun and build community from 5:30pm to 8:00pm.

Enjoy one three-beer flight and food pairings by Bombas, AND a souvenir glass to take home! Tours will be given of the facility and the opportunity to take home a growler or two will be available.



Cost: \$100 per couple/\$50 single. Participants must be 21 years old or older.

All proceeds will create opportunities to inspire the students of Mattawan Consolidated School to fulfill their dreams and aspirations! Space is limited, so please click [HERE](#) to reserve your tickets today!



Holly Rosenhagen and Cheryl Riethman

## Thanks and Farewell to Two Outstanding MPEF Members

MPEF would like to express sincere gratitude to Holly Rosenhagen and Cheryl Riethman as they step down from their long-standing roles on the foundation board.

Holly joined MPEF in 2006 and served as board president and marketing chairperson. Cheryl came to the board in 2004, served as secretary, and is a founding member of the Wildcat 5K committee.

Their commitment and dedication to MPEF and to Mattawan Consolidated Schools has been extraordinary. They both contributed innumerable hours to the work of the foundation

and their efforts have certainly made a difference in the lives of our students and our community.

As Holly departs, MPEF has elected Marika Hawes-Ruhrup as the new board president.

"It has been my privilege for the last 10 years to serve on MPEF and lead a wonderful group of volunteers as president for the past 5 years. Marika will do a fantastic job," says Holly Rosenhagen.

## Teachers are Applying Now for 2016-17 Brain Strong Awards

Each year, the Mattawan Public Education Foundation provides funding for grant awards to teachers in the Mattawan Consolidated School District.

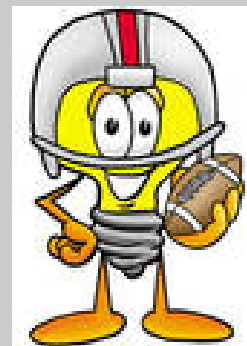


The purpose of "Brain Strong" Instruction Awards, formerly known as Creative Instruction Awards, is to enhance classroom instruction and encourage creativity and innovation. Individuals and groups of teachers are invited to apply for the awards. As always, MPEF is excited to see their amazing ideas and we look forward to announcing the recipients in just a few weeks.

Applications are due October 14th. See more [HERE](#).

### MPEF Quick Links

[Website](#)



### Watts on Says:

Homecoming is Friday, October 7th. Stop by the MPEF table at the Early EI, meet our board members, and learn more about us. Go Wildcats!



Thank you to all of our amazing sponsors, volunteers and our participants that helped raise \$7,500 this year for MPEF. We are beyond excited and grateful for an amazing community that comes together each year.

Have questions about MPEF? Contact us at [mpeforg@gmail.com](mailto:mpeforg@gmail.com) or call 269-668-3361 ext. 1728.

## Donate Today!

Mattawan Public Education Foundation is an all-volunteer, non-profit 501(c)3 organization. Our mission is to strengthen the community through funding unique educational opportunities. Please consider making a donation today to support Mattawan's students. We can't do it without you!

Donations (made payable to MPEF) can be mailed to: Mattawan Public Education Foundation, 56720 Murray Street, Mattawan, MI 49071

[Click Here to Donate Online via RevTrak](#)